

Presented by the Economy
League of Greater Philadelphia

COVID-19's Impact on Philadelphia's Food Economy



Before we Begin:

- Please “mute” your microphone
- Use the “Q&A” feature to type your questions for moderators or panelists in real time
- Be respectful

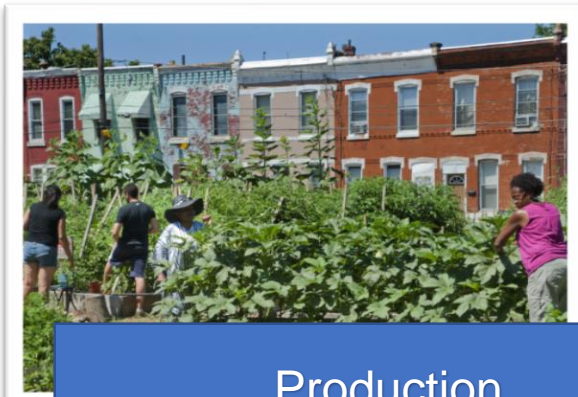


Agenda:

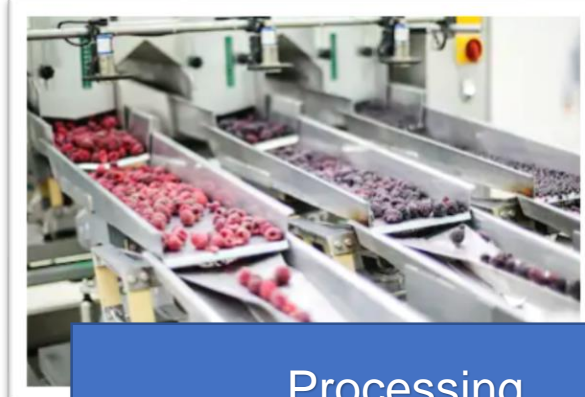
- Philadelphia's Food Economy Today
- COVID-19's Impact on the Food Economy
- Panel Discussion with Local Experts
- Q & A



What is the Food Economy?



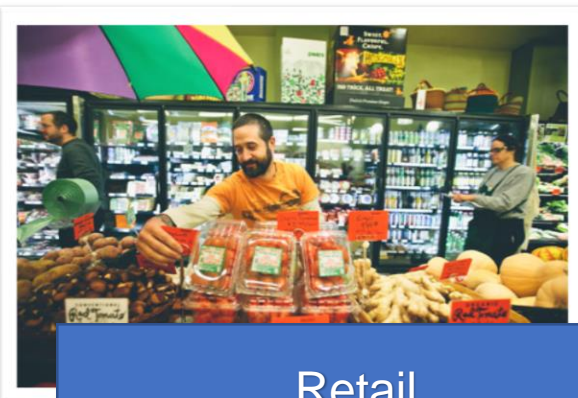
Production



Processing



Distribution



Retail



Hospitality



Waste & Recovery

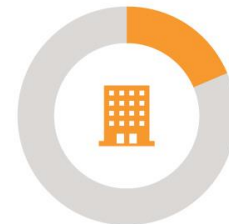
The Food Economy is Key Player in Philadelphia's Economy



CITY OF PHILADELPHIA FOOD ECONOMY JOBS & FIRMS



THE **79,000** FOOD-RELATED JOBS IN PHILADELPHIA ACCOUNT FOR **12%** OF ALL JOBS IN THE CITY.



6,500 FOOD-RELATED BUSINESSES CALL PHILADELPHIA HOME, REPRESENTING **18%** OF ALL FIRMS IN THE CITY.

Most Food-Related Businesses in Philadelphia are Small Businesses



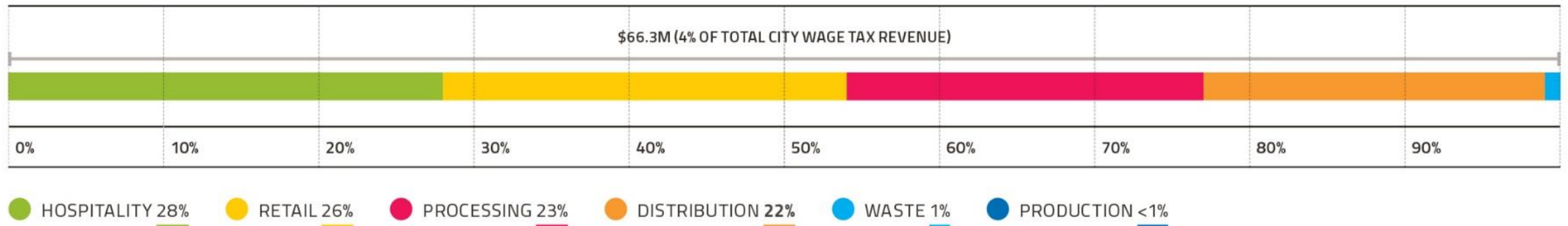
COMPOSITION OF FOOD-RELATED FIRM SIZE (BY NUMBER OF EMPLOYEES)

1-19	20-49	50-99	100-249	250+
86.4%	8.5%	3.5%	1.3%	0.3%

Source: Reference USA, Economy League of Greater Philadelphia

The Food Economy Contributes \$66.3 Million in Wage Tax Revenue to the City

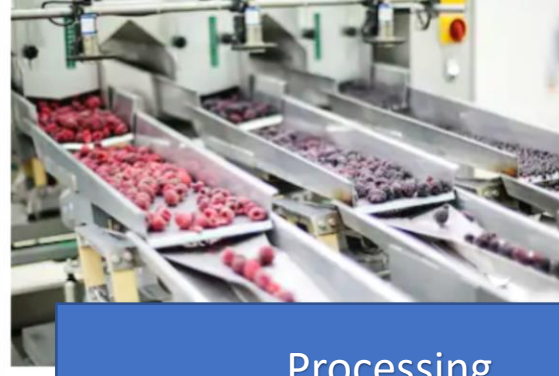
WAGE TAX REVENUE, PHILADELPHIA FOOD ECONOMY, 2016



The Food Economy is Adapting to the COVID-19 Pandemic



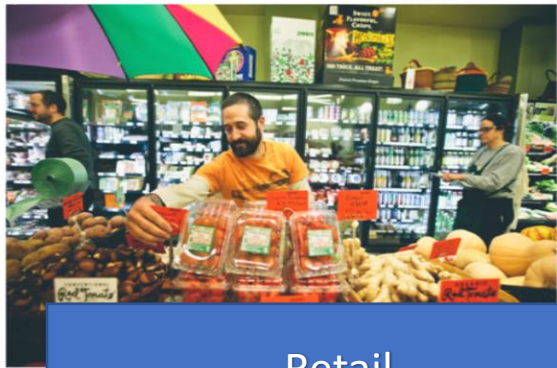
Production



Processing



Distribution



Retail



Hospitality

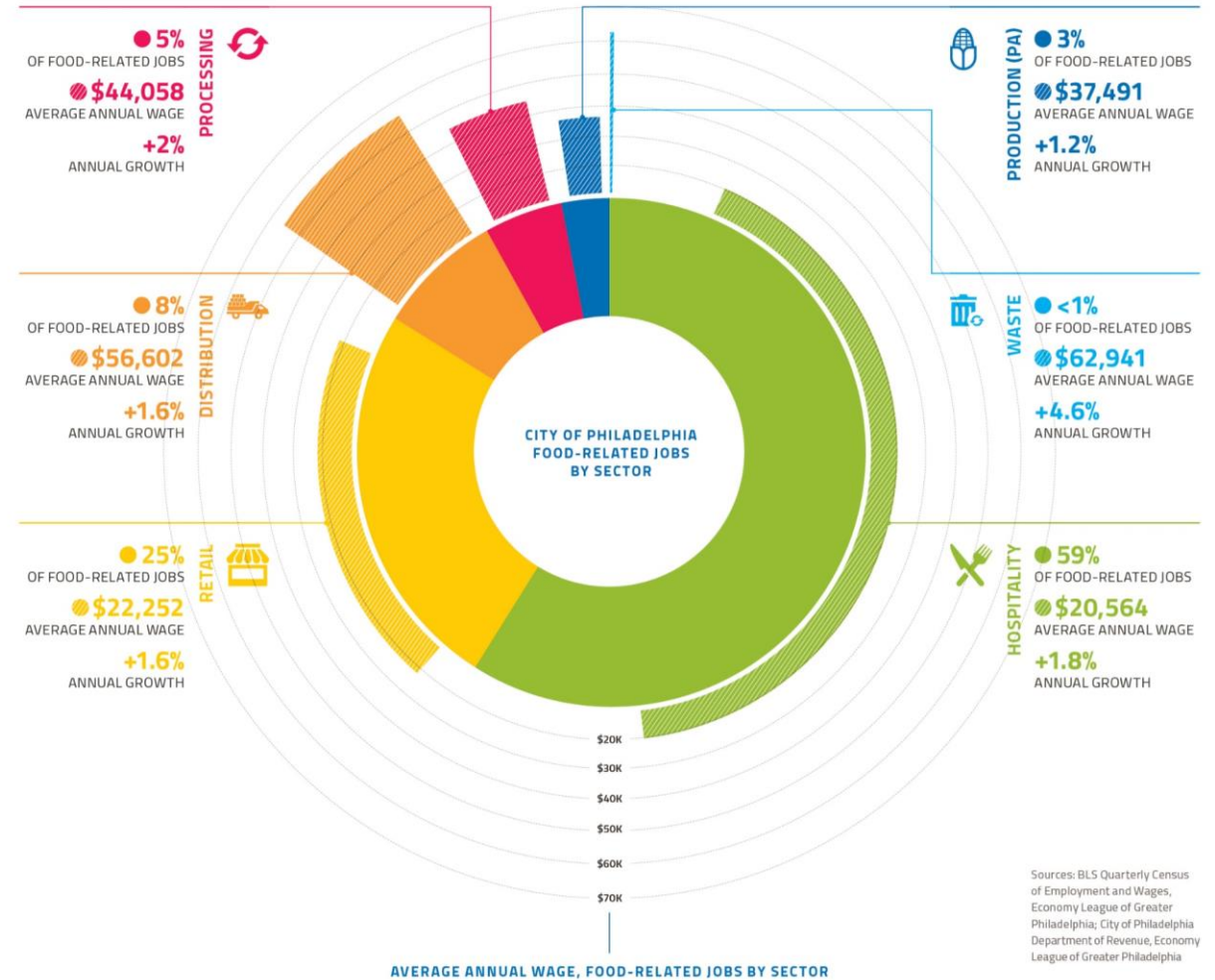


Waste & Recovery

Stays Open (with Stipulations)

Stays Open

Retail and Hospitality Represent the Majority of Jobs and Firms



Best Case Scenario: A loss of more than 7,000 jobs and \$3.6 million in lost wage taxes

Direct Job Loss in the Food Economy's Hospitality and Retail Sectors			
Food Economy Sector	Total Jobs as of 2018	10% Industry Contraction	
		Direct Job Loss	Estimated Direct Wage Tax Loss*
Hospitality	54,315	5,432	\$1,816,255
Retail	19,294	1,929	\$1,742,022
<i>Total</i>	<i>73,609</i>	<i>7,361</i>	<i>\$3,558,277</i>

Worst Case Scenario: A loss of more than 25,000 jobs and \$12.5 million in lost wage taxes

Direct Job Loss in the Food Economy's Hospitality and Retail Sectors			
Food Economy Sector	Total Jobs as of 2018	35% Industry Contraction	
		Direct Job Loss	Estimated Direct Wage Tax Loss*
Hospitality	54,315	19,010	\$6,356,891
Retail	19,294	6,753	\$6,097,077
<i>Total</i>	<i>73,609</i>	<i>25,763</i>	<i>\$12,453,968</i>

Where Do We Go From Here?



Our Panelists



Maria Campbell
Founder & CEO:
Cooks Who Care



Jeff Brown
President & CEO:
Brown's Super Stores, Inc.



Kim Carter
Vice-President of Partnerships:
The Enterprise Center

IMPACTS OF COVID-19 ON FOOD BUSINESSES IN OUR CULINARY CENTER



91.4% Reduction in Membership Revenue

32 out of 35 members are currently not working



Three Members Still Working:

Home Appetit (meal-prep), **Really Reel Ginger** (Reading Terminal), **Shabazz Pies**, (sells to supermarkets and small grocers)



Restaurant Members:

48th St. Grille & Attiya Ola Spirit first groups are takeout/delivery only, as per state mandate. 48th St. Grille experienced **40% drop in revenue**.



Hungry for More?

- Check out Economy League and Get Healthy Report “Good Eats” at economyleague.org/foodeconomy
- Check out the Economy League Leading Indicators report on the impacts of Covid19 on the food economy at economyleague.org/covid19LE1



Thank You!

